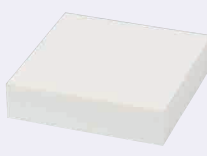


# Special Foam Polyurethane SOFRAS®

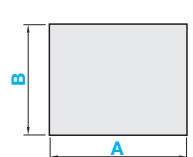
## Sheet Type, Rolled Type

This special urethane foam has good water retention and wear resistance allowing it to be used in industrial purposes such as application and moisture absorption.

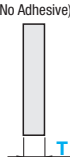
### Sheet Type



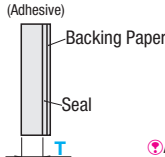
Type		Material	Hardness	Color
No Adhesive	Adhesive			
SOFRAS	SOFRASA	Special Foam Polyurethane SOFRAS®	Asker C11	White



(No Adhesive)



(Adhesive)



SOFRAS® is a registered trademark of AION Co., Ltd.

Adhesive thickness is 0.06 ~ 0.10mm.

Part Number	5mm Increment		Selection
	A	B	
No Adhesive SOFRAS	10-480	10-270	5
Adhesive SOFRASA	10-480	20-270	10
	20-480	20-270	15
			20



Ordering Example: Part Number - A - B - T  
SOFRAS - 300 - 200 - 10


### Adhesive Charge

A	B	
	10-100	105-200
10-100	-	-
105-200	-	-
205-300	-	-
305-400	-	-
405-480	-	-

Type	T	A	Unit Price		
			B		
			10-100	105-200	205-270
No Adhesive SOFRAS	5	10-100		-	-
		105-200		-	-
		205-300		-	-
		305-400		-	-
Adhesive SOFRASA	10	10-100		-	-
		105-200		-	-
		205-300		-	-
		305-400		-	-
		405-480		-	-


Type	T	A	Unit Price		
			B		
			20-100	105-200	205-270
No Adhesive SOFRAS	15	20-100		-	-
		105-200		-	-
		205-300		-	-
		305-400		-	-
Adhesive SOFRASA	20	20-100		-	-
		105-200		-	-
		205-300		-	-
		305-400		-	-
		405-480		-	-

### Rolled Type

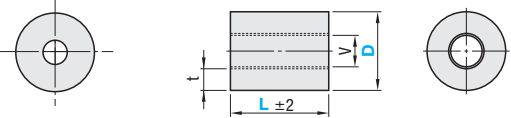


Type		Material	Hardness	Color
Hollow Roll (Sponge only)	With Resin Roll			
SOFRAS	SOFRASRP	Sponge: Special Foam Polyurethane SOFRAS® Resin Roll: Polypropylene (PP)	Asker C7	White

Hollow Roll (Sponge only) Tolerance D, V ±2



With Resin Roll Tolerance D ±2 V ±1



Type	Part Number	Selection	5mm Increment	V	t
Hollow Roll (Sponge only)	SOFRAS	40	30-600	22	9
With Resin Roll	SOFRASRP	40	30-600	16	9



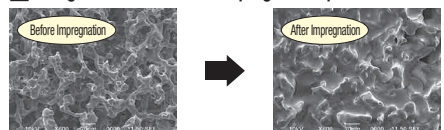
Ordering Example: Part Number - D - L  
SOFRASRP - 40 - 200

Type	Part Number	D	Unit Price					
			L (5mm Increment)					
Hollow Roll (Sponge only)	SOFRAS	40	30-100	101-200	201-300	301-400	401-500	501-600
With Resin Roll	SOFRASRP	40						

### Enlarged Photo



### Enlarged Photo of Grease-impregnated Special Urethane



### Material Properties

Air Bubble	Continuous Cell		Lamination	Semi-closed Cell	Independent Cell
Material	SOFRAS®	Urethane Foam	Felt	EPT Sealer®	CR, EPDM, NBR, Silicon, Fluorine
Page	P446	P441	P447	P445	P441
Application Example	Application and Moisture Absorption			Dust-proof and Protection	
Apparent Density g/cm³	0.2	0.02	0.2	-	0.1~0.3
Tensile Strength kPa	1000	76	-	-	-
Water Retention Rate %	400	-	80	-	-
Heat Resistant °C	130	70	120	-	130~200
Water Retention	○	○	○	△	×
Abrasion Resistance	○	×	×	×	○
Water Resistance	○	△	○	×	○
Chemical Resistance	○	×	△	×	×

