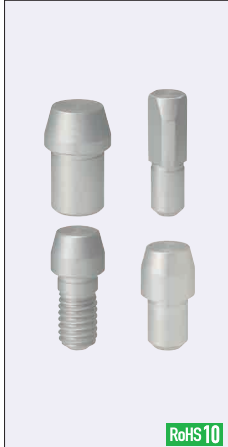


# Locating Pins - Large Head, Tapered

## Nonmagnetic

**Features:** Nonmagnetic (Aluminum) Locating Pins. Does not magnetically affect the surroundings.

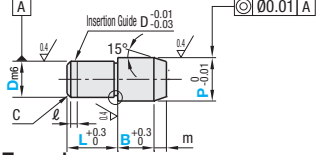


RoHS 10

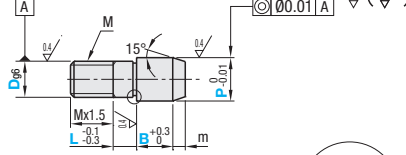
Material	Surface Treatment	Tip Shape	Type		
			Press Fit	Tapped	Threaded
EN AW-2017 Equiv.	Clear Anodize	Round	AFPMA	AFPMTA	AFPMAA
		Diamond	AFPMD	AFPMTD	AFPMAA

Threads are prone to be crushed due to the soft material. Refer to the recommended tightening torque in the table for mounting.

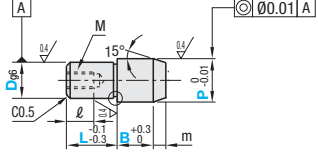
### Press Fit



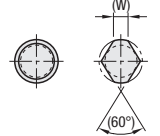
### Threaded



### Tapped



(Round) (Diamond)



When P<3 a=0.5  
When P3 a=1.0  
d=P-0.1 d=P-0.2  
Relief dimension is a reference value.

### Press Fit

Part Number	Type	D	d dim. Tolerance m3	P	L	B	C	m	(W)	ℓ	Unit Price		
											0.01mm Increment	1mm Increment	0.1mm Increment
AFPMA AFPMD	Diamond Shape is applicable when D≥2.	1		1.50-2.50	2-3	1.0-5.0	0.1	0.5	-	0			
		2	+0.008	2.50-4.00	2-6	1.0-10.0	0.5	1	1.2	1			
		3		3.50-6.00	3-6	1.0-10.0		2	1.5				
		4		4.50-7.00	4-8	1.0-10.0	1		1.8				
		5	+0.012	5.50-8.00	5-10	1.0-10.0		3	2.2				
		6	+0.004	6.50-10.00	6-12	1.0-12.0		3	3				
		8	+0.015	9.00-13.00	8-16	1.0-15.0	1.5		3.5				
		10	+0.006	11.00-15.00	10-20	3.0-20.0		4			4		
		12		13.00-16.00	12-24	3.0-20.0	5		5				
		13	+0.018	14.00-18.00	13-26	5.0-20.0	2				5.5		
		16	+0.007	17.00-25.00	16-32	5.0-20.0		3	5		7	2	

### Tapped

Part Number	Type	D	D dim. Tolerance g6	P	L	B	m	(W)	ℓ	M (Coarse)	Recommended Tightening Torque (kgf·cm)	Unit Price			
												0.01mm Increment	1mm Increment	0.1mm Increment	AFPMTA
AFPMTA AFPMTD		6	-0.004 -0.012	6.50-10.00	6(9)-12	2.0-12.0	3	3	5	M3	6.25				
		8	-0.005	9.00-13.00	8(12)-16	2.0-15.0	4	3.5	10	M5	22.5				
		10	-0.014	11.00-15.00	10(12)-20	3.0-20.0		4				8			
		12		13.00-16.00	12-24	3.0-20.0	5	5							
		13	-0.006	14.00-18.00	13(14)-26	5.0-20.0		10				5.5			
		16	-0.017	17.00-25.00	16-32	5.0-20.0	5					7	12	M8	

L dimension in ( ) is applicable to Diamond Shape. Recommended tightening torque is reference value.

### Threaded

Part Number	Type	D	D dim. Tolerance g6	P	L	B	m	(W)	M (Coarse)	Recommended Tightening Torque (kgf·cm)	Unit Price	
											0.01mm Increment	1mm Increment
AFPMAA AFPMAA		3	-0.002 -0.008	3.50-6.00	2-6	1.0-10.0	2	1.5	3	5		
		4		4.50-7.00	2-8	1.0-10.0	3	1.8	4	7		
		5	-0.004	5.50-8.00	3-10	1.0-10.0		3	2.2	5	8.75	
		6	-0.012	6.50-10.00	3-10	1.0-12.0	3		6	17.5		
		8	-0.005	9.00-13.00	5-10	1.0-15.0	4	3.5	8	18.75		
		10	-0.014	11.00-15.00	5-15	3.0-20.0		4	10	27.5		
		12	-0.006	13.00-18.00	8-15	3.0-20.0	5	5	12	92.5		
		16	-0.017	17.00-25.00	8-20	5.0-20.0		5	7	16	100	

Recommended tightening torque is reference value.

Ordering Example: Part Number - P - L - B  
AFPMA6 - P8.50 - L6 - B3.0

Alterations: Part Number - P - L - B - (MH, RC, AC)  
AFPMTA10 - P12.00 - L15 - B6.0 - AC

Alterations	Tapping	Stem R Alteration	Air Vent												
Code	MH	RC	AC												
Spec.	<p>Adds a tapped hole.</p> <p>Ordering Code: MH</p> <table border="1"> <tr> <th>D</th> <th>MH (Coarse)</th> <th>ℓ2</th> </tr> <tr> <td>6</td> <td>M3</td> <td>4</td> </tr> <tr> <td>8-13</td> <td>M4</td> <td>6</td> </tr> <tr> <td>16</td> <td>M6</td> <td>9</td> </tr> </table> <p>Applicable when D≥6 B≥ℓ2+4 Not applicable to Tapped.</p>	D	MH (Coarse)	ℓ2	6	M3	4	8-13	M4	6	16	M6	9	<p>Changes the relief to R0.5.</p> <p>Ordering Code: RC</p> <p>Applicable when P-D≥2</p>	<p>Adds an air vent.</p> <p>Ordering Code: AC</p> <p>Not applicable to Threaded.</p>
D	MH (Coarse)	ℓ2													
6	M3	4													
8-13	M4	6													
16	M6	9													

**Example** Since made of nonmagnetic metal, usable around small workpieces and the inside of the measuring instruments without magnetic effects.

