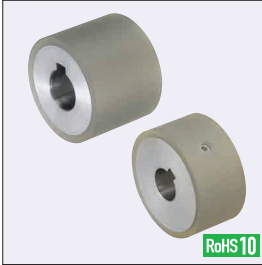


# Rollers

## Straight with Keyway

■ **Features:** 5th business day shipping is available for shaft bore with keyway machining and Urethane Lined.

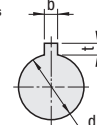


L Selectable		Urethane Thickness Selectable		Material		Hardness	When L ≤ dx3, hole d is machined from the same direction. When L > dx3, hole d is machined from both ends as shown below. There may be no relief in some cases.
Straight	Tapped	Straight	Tapped	Core	Lining		
ROUSK	ROUSKN	ROEUSK	ROEUSKN	EN 1.4301 Equiv.	Urethane (Natural Color)	Shore A90	
ROUAK	ROUAKN	ROEUAK	ROEUAKN	EN AW-5052 Equiv.		Shore A70	
ROGSK	ROGSKN	ROEGSK	ROEGSKN	EN 1.4301 Equiv.		Shore A70	
ROGAK	ROGAKN	ROEGAK	ROEGAKN	Aluminum Alloy 5000 series		Shore A50	
ROHSK	ROHSKN	ROEHSK	-	EN 1.4301 Equiv.			
ROHAK	ROHAKN	ROEHAK	ROEHAKN	EN AW-5052 Equiv.			

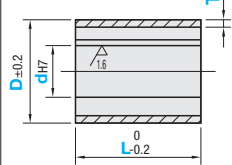
☞ Urethane is baked on the outer circumference of the core material.

■ **Keyway Dimensions**

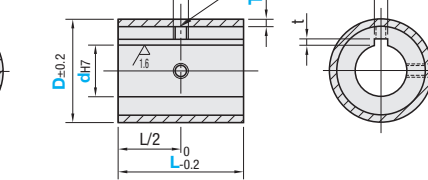
6.3 / ( 1.6 / )



**Straight**



**Tapped**



Shaft Hole Dia.	d	Reference Dim.	b	Tolerance (JS9)	Reference Dim.	t	Tolerance (JS9)
8	8	3	±0.0125	1.4			
10	10	4	±0.0150	1.8		+0.1	0
12	12	5	±0.0150	2.3			
15	15	6	±0.0180	2.8			
20	20	8	±0.0180	3.3		+0.2	0
25	25						
30	30						

■ **L Selectable**

Part Number		D	dh7 Selection					L Selection										T	M
Type	Type		20	8	10	12	15	15	20	25	30	40	50	60	70	80	90		
Straight	Tapped	20	8	10	12	15	15	20	25	30	40	50	60	70	80	90	100	3	3
ROUSK	ROUSKN	25	8	10	12	15	15	20	25	30	40	50	60	70	80	90	100		
ROUAK	ROUAKN	30	8	10	12	15	15	20	25	30	40	50	60	70	80	90	100		
ROGSK	ROGSKN	35	10	12	15	20	20	25	30	40	50	60	70	80	90	100			
ROGAK	ROGAKN	40	10	12	15	20	20	25	30	40	50	60	70	80	90	100			
ROHSK	ROHSKN	50	12	15	20	25	25	30	40	50	60	70	80	90	100			4	4
ROHAK	ROHAKN																		

■ **Urethane Thickness Selectable**

Part Number		D	dh7 Selection			L 10mm Increment	T Selection	M
Type	Type		10	12	15			
Straight	Tapped	50	10	12	15	30~100	5	5
ROEUSK	ROEUSKN	60	12	15	20			
ROEUAK	ROEUAKN	80	15	20	25			
ROEGSK	ROEGSKN	100	20	25	30			
ROEGAK	ROEGAKN							
ROEHSK	ROEHSKN							
ROEHAK	ROEHAKN							6

Ordering Example

Part Number	-	d	-	L	-	T
ROUSK20	-	8	-	30	-	
ROGSKN30	-	12	-	40	-	
ROEUSK80	-	20	-	50	-	T5

Alterations

Part Number	-	d	-	L	-	T	-	(UDC, LC)
ROUSK20	-	8	-	30	-		-	UDC
ROEUSK60	-	20	-	50	-	T5	-	LC29
ROUAK30	-	10	-	30	-		-	

Alterations	Code	Spec.
Change to Antistatic Urethane (Urethane Color: Gray)	UDC	Change Urethane Shore A90 to Antistatic Urethane Change to Urethane Ordering Code UDC Specific Volume Resistivity 2.1x10 <sup>10</sup> -cm Surface Resistivity 4.0x10 <sup>10</sup> Ω (Temperature 30°C / Humidity 60%)
L Dimension	LC	Ordering Code LC11 LC=1mm Increment 10 ≤ LC < L ☞ Only applicable to L Selectable Types.

■ **L Selectable**

D	L	Unit Price					
		Straight - Tapped ☞ For Tapped Type, add to the prices shown below.					
		ROUSK (ROUSKN)	ROUAK (ROUAKN)	ROGSK (ROGSKN)	ROHSK (ROHSKN)	ROGAK (ROGAKN)	ROHAK (ROHAKN)
20	15-25						
20	30-50						
20	60-100						
25	15-25						
25	30-50						
25	60-100						
30	15-25						
30	30-50						
30	60-100						
35	20-25						
35	30-50						
35	60-100						
40	20-25						
40	30-50						
40	60-100						
50	25						
50	30-50						
50	60-100						

■ **Urethane Thickness Selectable**

D	L	Unit Price					
		Straight - Tapped ☞ For Tapped Type, add to the prices shown below.					
		ROEUSK (ROEUSKN)	ROEUAK (ROEUAKN)	ROEGSK (ROEGSKN)	ROEGAK (ROEGAKN)	ROEHSK (ROEHSKN)	ROEHAK (ROEHAKN)
50	30-50						
50	60-100						
60	30-50						
60	60-100						
80	30-50						
80	60-100						
100	30-50						
100	60-100						

☞ Urethane may discolor over time, but there is no effect on physical properties.