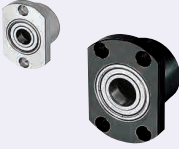


Bearings with Housings

Double Bearings, Non-Retained, L Configurable



Type			Material		Surface Treatment	
Round	Square	Compact	Bearing	Housing	Bearing	Housing
BGFRCB	BGFSCB	BGFCCB	Steel	EN 1.1191 Equiv.	Black Oxide	
BGFR	BGFSC	BGFCC			Electroless Nickel Plating	
BAFR	-	BAFCC			Clear Anodize	
SBAFR	-	-	* Stainless Steel	Aluminum Alloy 2000 series	Clear Anodize	
SBGFR	SBGFSC	SBGFCC			-	

* Bearings with Rubber Seals (VV and DD) are all made of steel.

6.3 / (1.6 /)

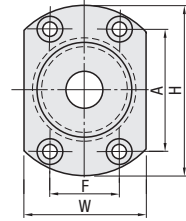
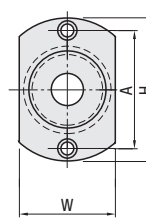
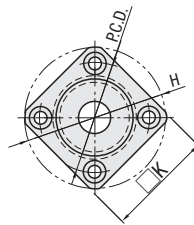
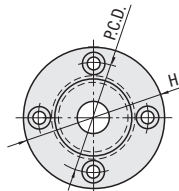
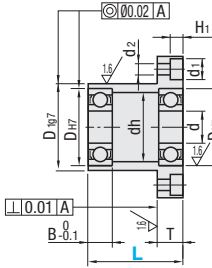
Round

Square

Compact

d3-17

d20-50



Bearing Accuracy: JIS B 1514 Class 0

Type	Part Number		Seal	L 1mm Increment	d	DH7	Tolerance	B	H	W	T	dh	D ₁₉₇	Tolerance	P.C.D.	K	A	F	d ₁	d ₂	H ₁
	Type	Bearing No.																			
(Round)	BGFRCB	623	ZZ Double Shielded	20~40	3	10	+0.015	4	33	16	7	7	14	-0.006	24	27	24	-	8	4.5	4.1
	BGFR	624			4	13	-0.024	26	28	26											
	BAFR	605			5	14	+0.018	5	36	20		10	17	26	30	26					
	SBAFR	625			6	16	0	5	38	22		12	20	28	31	28					
	SBGFR	606			7	17	-0.007	6	39	23		13	21	29	32	29					
	BGFR	626			8	19	+0.021	6	41	25		15	24	-0.028	31	34	31				
	BAFR	678			9	12	+0.018	3.5	34	18		10	16	-0.006	25	27	25				
	SBAFR	698			10	19	0	6	41	25		15	24	-0.028	31	34	31				
	SBGFR	608			11	22	+0.021	7	45	29		18	27	-0.007	35	36	35				
	BGFR	628			12	24	0	8	47	32		20	30	-0.028	37	37	37				
	BGFR	6700			13	15	+0.018	4	37	22		12	19	-0.028	27	30	27				
	BGFR	6800			14	19	0	5	41	25		15	24	-0.009	31	34	31				
BGFR	6900	15	22	+0.021	6	45	29	19	27	-0.034	35	36	35								
BGFR	6000	16	26	0	8	50	34	22	32	-0.009	40	39	40								
BGFR	6200	17	30	+0.018	9	54	38	24	36	-0.034	44	42	44								
BGFR	6701	18	15	+0.018	4	40	25	15	23	-0.007	30	31	30								
BGFR	6801	19	21	+0.021	5	44	29	17	26	-0.028	34	35	34								
BGFR	6901	20	24	0	6	48	31	21	30	-0.028	38	38	38								
BGFR	6001	21	28	+0.021	8	52	36	24	34	-0.009	42	40	42								
BGFR	6201	22	32	+0.025	10	56	40	26	38	-0.034	46	43	46								
BGFR	6702	23	21	+0.021	4	44	29	18	26	-0.007	34	35	34								
BGFR	6802	24	24	0	5	47	32	20	30	-0.028	37	37	37								
BGFR	6902	25	28	+0.025	7	57	37	25	35	-0.009	45	45	45								
BGFR	6002	26	32	+0.025	9	60	40	28	38	-0.034	48	46	48								
BGFR	6202	27	35	0	11	64	44	29	42	-0.034	52	49	52								
BGFR	6803	28	26	+0.021	5	50	34	22	32	-0.009	40	39	40								
BGFR	6903	29	30	0	7	60	38	27	36	-0.034	48	46	48								
BGFR	6003	30	35	+0.025	10	66	44	31	42	-0.034	54	50	54								
BGFR	6203	31	40	0	12	72	50	34	48	-0.034	60	54	60								
BGFR	6704	32	27	+0.021	4	51	35	23	33	-0.010	41	39	32								
BGFR	6804	33	32	0	7	60	40	28	38	-0.009	48	46	38								
BGFR	6904	34	37	+0.025	9	69	47	34	45	-0.034	56	54	51								
BGFR	6004	35	42	0	12	77	54	36	50	-0.010	64	59	56								
BGFR	6204	36	47	+0.025	14	81	58	40	54	-0.010	68	62	59								
BGFR	6805	37	37	0	7	69	47	34	45	-0.009	56	54	51								
BGFR	6905	38	42	+0.030	9	77	54	36	50	-0.034	64	59	56								
BGFR	6005	39	47	0	12	88	58	41	54	-0.010	72	67	63								
BGFR	6205	40	52	+0.030	15	94	64	45	60	-0.040	78	72	68								
BGFR	6806	41	42	+0.025	7	77	54	36	50	-0.034	64	59	56								
BGFR	6906	42	47	0	9	88	58	41	54	-0.010	72	67	63								
BGFR	6006	43	55	+0.030	13	96	66	48	62	-0.040	80	73	70								
BGFR	6206	44	62	0	16	104	74	55	70	-0.040	88	79	77								
BGFR	6007	45	62	+0.030	14	104	74	55	70	-0.040	88	79	75								
BGFR	6207	46	72	0	17	126	88	20	64	-0.012	105	95	92								
BGFR	6008	47	68	+0.030	15	114	82	13	60	-0.012	96	86	80								
BGFR	6208	48	80	0	18	134	96	18	74	-0.012	113	102	98								
BGFR	6010	49	80	+0.035	16	134	96	20	74	-0.047	113	-	98								
BGFR	6210	50	90	0	20	147	110	83	106	-0.047	126	-	104								

* Check for available sizes in the price list.

*1 No. 623, 624, 605, 606 and numbers starting with 67 are not available for VV (Non-contact Sealed).

*2 Bearings with Rubber Seals are all made of steel.